



Bicycle and E-Bike/Scooter Safety Course

Presented by
Lexington Junior High & Cypress High School
in partnership w / Cypress Police Department

Purpose of this Class?

■ Education

- ▶ Learn about rules and regulations pertaining to bicycles and E-Bikes
- ▶ Learn about vehicle code as it applies to riders
- ▶ Learn about roadway safety
- ▶ Help keep you safe on your e-bike and prepare you for when you become a licensed driver

■ Prevention

- ▶ Accidents & Tickets

Rules of the Road

CALIFORNIA VEHICLE CODE (CVC)

- 21200(a) CVC – Rights of Bicyclists
 - ▷ Every person riding a bicycle upon a highway has all the rights and is subject to all the provisions applicable to the driver of a vehicle
 - ▷ Must follow the same rules of the road as drivers of motor vehicles



**e-bikes are just like cars and have to follow same rules of the road*

Rules of the Road

- Direction of Travel

CVC 21650 – Cars

RIGHT side of
roadway

CVC 21650.1 – Bicycles
(must go same direction
as cars!)



Rules of the Road

Can you legally ride e-bikes on the sidewalk?

It depends on the city. In Los Alamitos it is legal, in Cypress it is not. Cypress has bike lanes and students should be riding with the flow of traffic in those designated bike lanes. However, e-bike riders are encouraged to use the street.



Good Practice

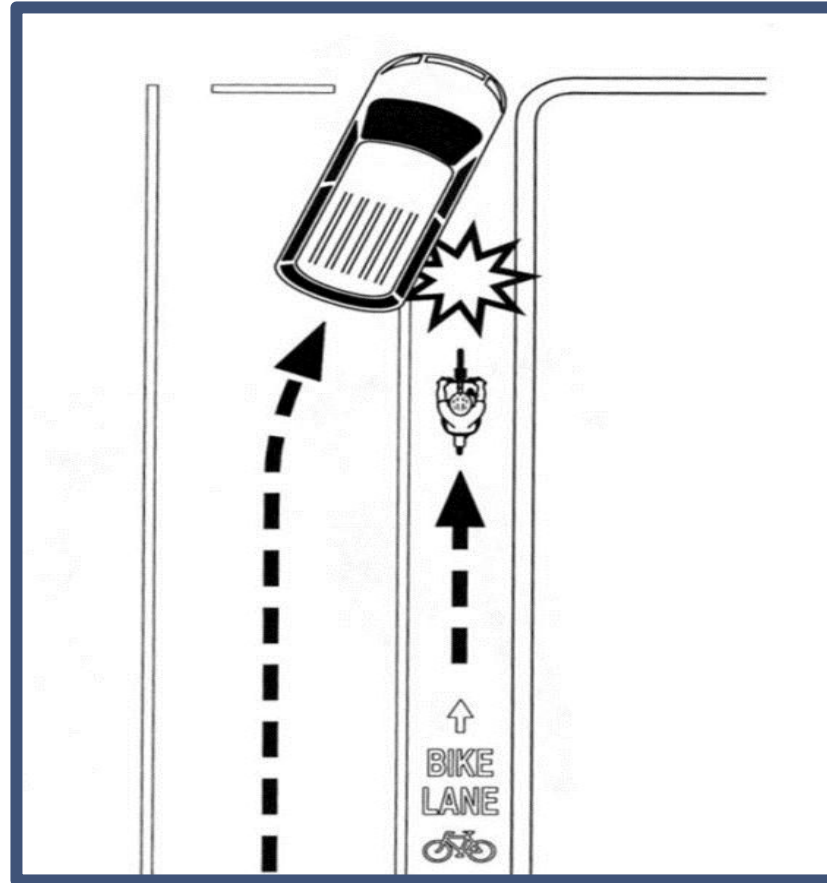
- Emerging from, entering alley, driveway, bicycle path, etc.
 - ▷ Upon entering a bicycle lane or roadway, you shall yield the right-of-way to all vehicles or bicycles already on the roadway.
- A primary collision factor in many collisions involving young riders
 - Never assume what a driver will do!
 - ▷ Always assume the driver DOES NOT see you.

Better Practice

- ▷ When entering a crosswalk from riding on the sidewalk opposite the flow of traffic (*always safer to go same direction as cars*)
- ▷ Consider where drivers are looking when turning (*they are looking to make sure their turn is clear from oncoming traffic and won't see you*)
- ▷ Always wait for crossing guard if one is present



Turning Movements



Signs and Signals



Signs and Signals

- 21456.2(a) CVC – TRAFFIC SIGNALS
 - ▷ Unless otherwise directed by a bicycle signal as provided in Section 21456.3, an operator of a bicycle shall obey the provisions of this article applicable to the driver of a vehicle.



Signs and Signals

- Red Light – Right Turn
 - ▶ E-bike riders **MUST** come to a complete **stop** before making a right turn. *(Always look both ways before turning!)*



Signs and Signals

■ Fines and Penalties

- ▷ 21453(a) CVC – Failure to Stop at Red Light
 - ▷ Fine - \$490
 - ▷ Stop at or near the limit line

- ▷ 21456.2(a) CVC – Bicycle Obey Traffic Signals and Signs





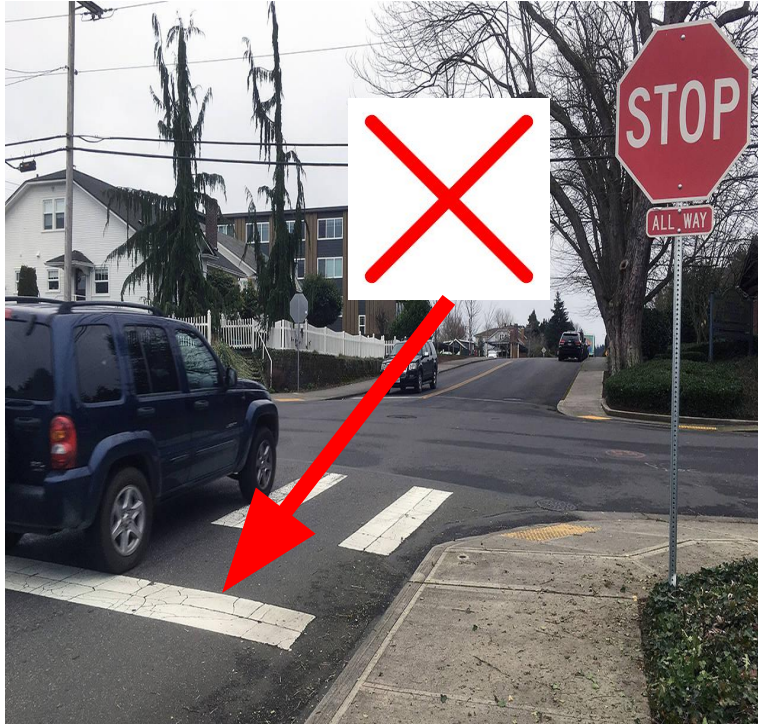
Stop Signs

- 22450(a) CVC – Stop Signs
 - ▷ The driver of any vehicle approaching a stop sign at the entrance to, or within, an intersection shall stop at a limit line, if marked, otherwise before entering the crosswalk on the near side of the intersection.
 - ▷ If there is no limit line or crosswalk, the driver shall stop at the entrance to the intersecting roadway .

* *bikes/ebikes in the road must follow these rules*



Stop Signs



Speeding

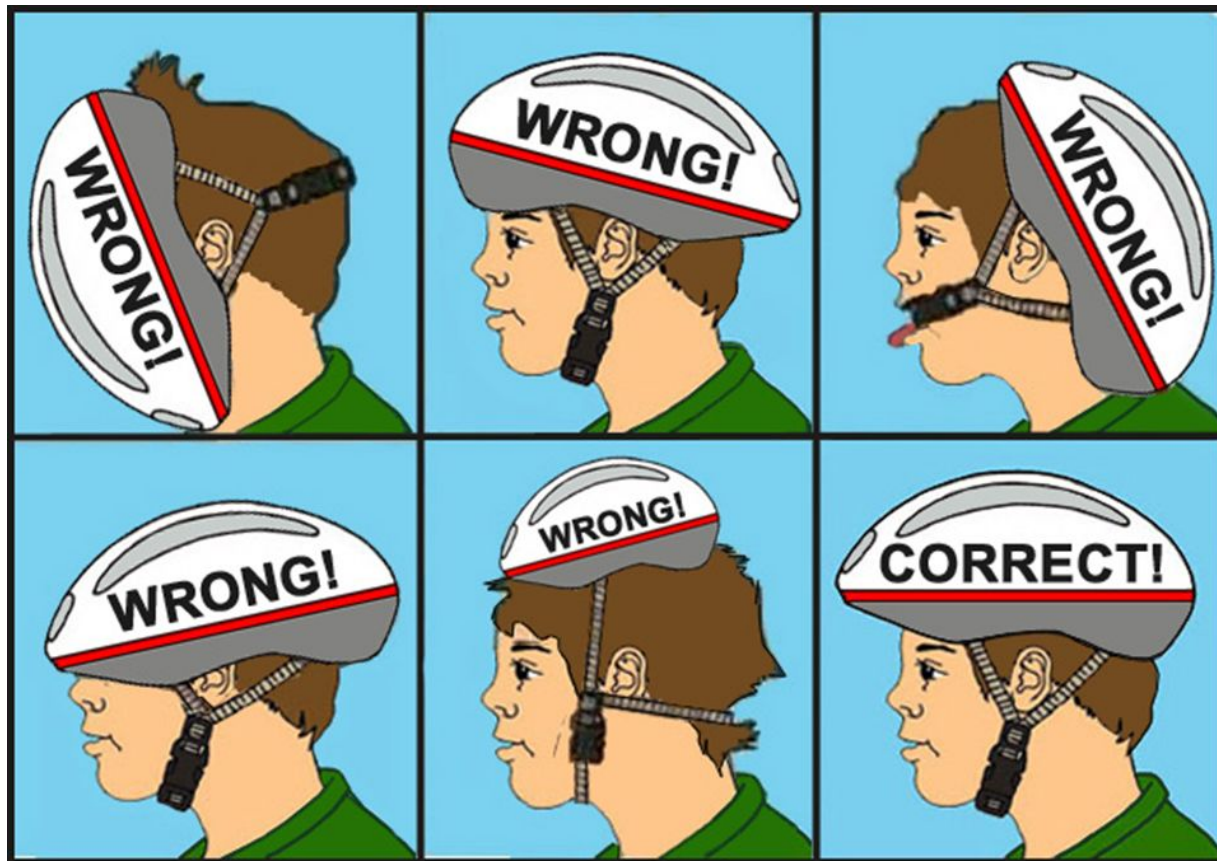
- Speeding – CVC 22350
 - ▶ No person shall drive a vehicle upon a highway at a speed greater than is reasonable or prudent having due regard for weather, visibility, the traffic on, and the surface and width of, the highway, and in no event at a speed which endangers the safety of persons or property
- There is NO safe speed to rear-end a vehicle!
 - *No weaving in and out of traffic – need to stay with speed of traffic*
 - *If the posted speed is unsafe due to traffic, weather, or hazards, you must slow down to safe speed even if it is below the limit*

BICYCLES, E-Bikes & E-Scooters

Bicycle Helmets

- 21212(a) CVC – Bicycle Helmets
 - ▷ Under 18 years of age required
 - ▷ Applies to bicycles, scooters, skateboards, in-line or roller skates, and **all passengers!!!!**
 - ▷ Also applies to a person riding in a restraining seat attached to the bicycle or in a trailer towed by the bicycle
 - ▷ On any street, bikeway, or any other public path or trail
 - ▷ Must properly fit and must be fastened

Bicycle Helmets



Bicycle Helmets

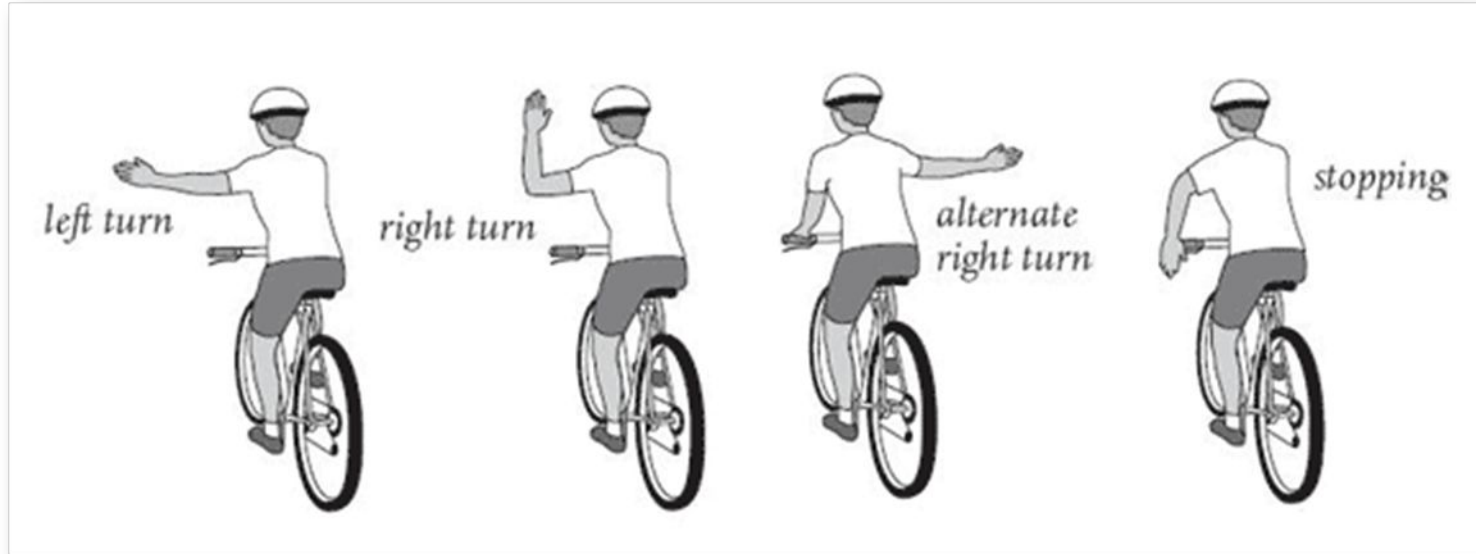
- National Highway Transportation Safety Administration (NHTSA) facts:

1. Bicycle helmets reduce the risk of head injury by up to 85%
2. Each year bicycle related deaths number about 900
3. U.S. emergency rooms treat more than 500,000 people for bicycle related injuries...Many of these injuries involve the head

WEARING A HELMET CAN SAVE YOUR LIFE!!!

Bicycle Hand Signs

- 21208(b) CVC – Reasonable Safety
 - No person operating a bicycle shall leave a bicycle lane until the movement can be made with reasonable safety and then only after giving an appropriate signal



Safe Riding

- Riding Double
 - ▷ Must have permanent seat attached
 - ▷ Passenger on bike under 18 must also wear helmet
 - ▷ Remember it affects Vision, Balance, Braking



Safe Riding

- 21203 CVC – Hitching a Ride
 - ▷ No person riding upon any motorcycle, motorized bicycle, bicycle, coaster, roller skates, sled, or toy vehicle shall attach the same or himself to any streetcar or vehicle on the roadway.
- 21712(3)(h) CVC – Towing a Rider
 - ▷ A person shall not knowingly drive a motor vehicle that is towing a person riding upon a motorcycle, motorized bicycle, bicycle, coaster, roller skates, sled, skis, or toy vehicle.

- 21205 CVC – Carrying Articles
 - ▷ No person operating a bicycle shall carry any package, bundle or article which prevents the operator from keeping at least one hand upon the handlebars.



**Backpacks should be secured, or on your back allowing you to keep both hands on the handle bars*

E-Bikes

- An “electric bicycle” is a bicycle equipped with **fully operative pedals** and an electric motor of less than **750 watts** (CVC 312.5)



E-Bikes

- Class 1 eBike
 - ▷ Equipped with a motor that provides assistance only when rider is pedaling with a maximum motor assisted speed of 20 MPH
- Class 2 eBike
 - ▷ Throttle assisted electric bicycle equipped with motors that exclusively propel the bicycle with a maximum motor assisted speed of 20 MPH

E-Bikes

- Class 3 eBike
 - ▷ Equipped with a motor that provides assistance only when the rider is pedaling, with a maximum motor assisted speed of 28 MPH
 - ▷ Riders must be 16 years old and wear a helmet
- eBikes are subject to all other laws applicable to bicycles

Headsets and Earplugs

- 27400 CVC – Headsets and Ear Buds
 - ▷ Applies to vehicles and bicycles
 - ▷ Only allowed ONE ear bud



**For safety reasons, you must be able to hear your surroundings and emergency vehicles approaching*

Headsets and Earbuds - FROM A LAW FIRM

- Wearing headphones or earbuds while driving can distract you in two critical ways:
 - ▶ They can prevent you from being able to hear what is going on in your surroundings. This can prevent you from avoiding danger. This is an auditory distraction. If you cannot hear emergency vehicle sirens, honking horns, or other background sounds, you are putting yourself and other road users at risk
 - ▶ Whatever you are listening to through your headphones can take your mind and attention away from the road. This is a cognitive distraction

Bike Maintenance

- **It is imperative to check over your bike routinely for any loose connections, nuts or bolts.**
- **Proper upkeep and bike maintenance prevent accidents from equipment malfunction.**

Safety Course assessment

All students must take the Safety Course Assessment and score 100% on it

Click here for quiz:

[Safety Course Assessment Link](#)

(You must be signed in to your AUHSD Google account to access the course)

